

EM EKG Fundamentals

37 year-old female with history of migraines complaining of a sudden onset, severe headache.

HR: 55	BP: 210/120
RR: 18	O2 Sat: 97%

What is your interpretation of the triage EKG?

History/Clinical Picture

Rate

Rhythm

Axis

P Waves

Q/R/S Waves

U Waves

T Waves

PR Interval

QRS Width

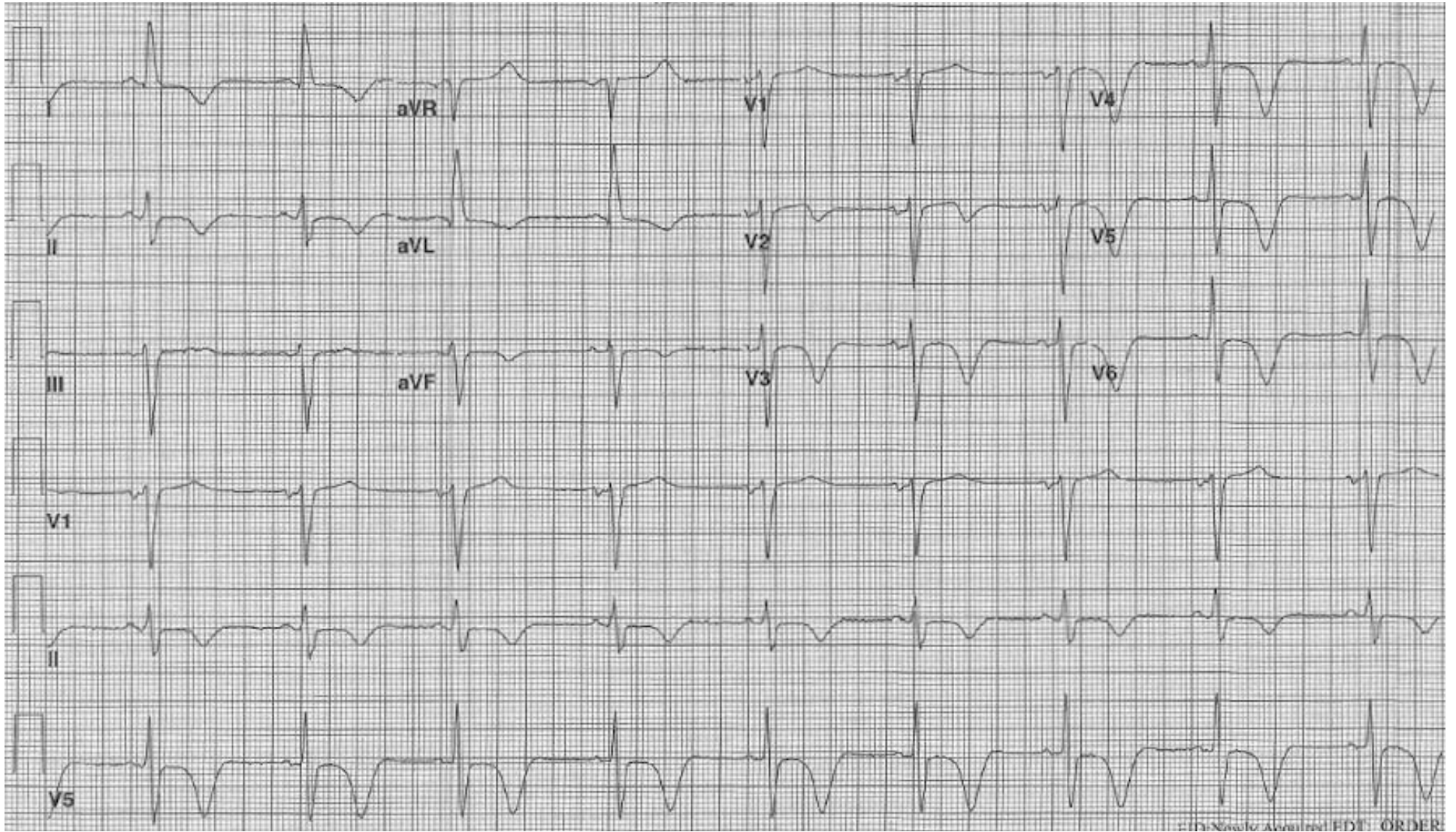
ST Segment

QT Interval

Resource Links: [Life in the Fast Lane](#)

[Dr. Steve Smith's Blog](#)

Triage EKG



© 2013 New York University (NYU) ORDER