

Foundations EKG I - Unit 5, Case 19



44 y/o M with a history of a “heart problem” presents with palpitations. He reports he has been “shocked” before and is prescribed rivaroxaban.

HR: 150 BP: 120/80

RR: 14 O2 Sat: 99%

What is your interpretation of the EKG?

History/Clinical Picture

Rate

Rhythm

Axis

P Waves

Q/R/S Waves

T Waves

U Waves

PR Interval

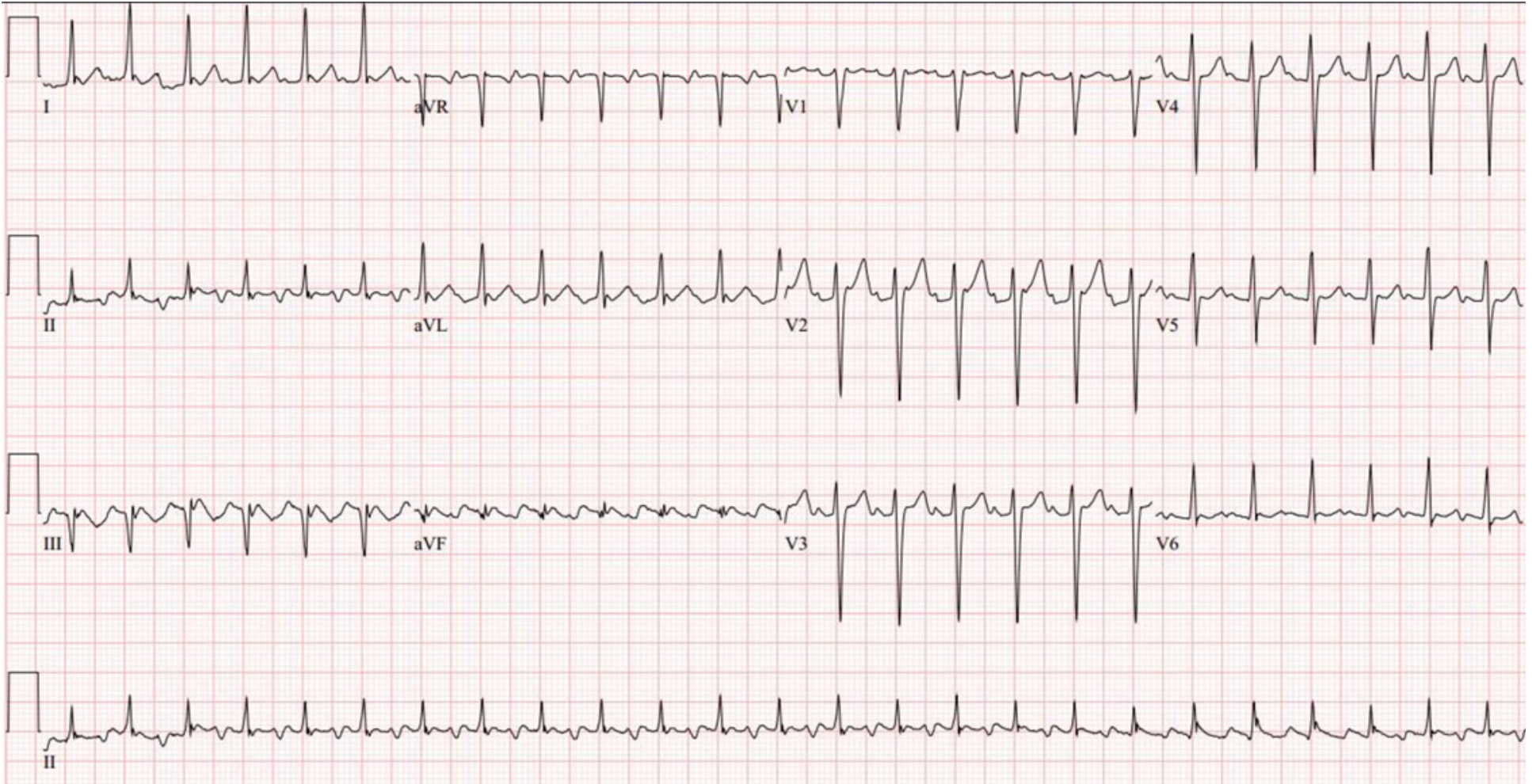
QRS Width

ST Segment

QT Interval

What are your management options for this patient?

Triage EKG—Unit 5, Case 19



EKG courtesy of Shanna Jones, MD