

Foundations EKG II - Unit 7, Case 27



54yoF presents for syncope. She is currently asymptomatic

HR: 55 BP: 146/99

RR: 12 O2 Sat: 99%

What is your interpretation of the EKG?

History/Clinical Picture

Rate

Rhythm

Axis

P Waves

Q/R/S Waves

T Waves

U Waves

PR Interval

QRS Width

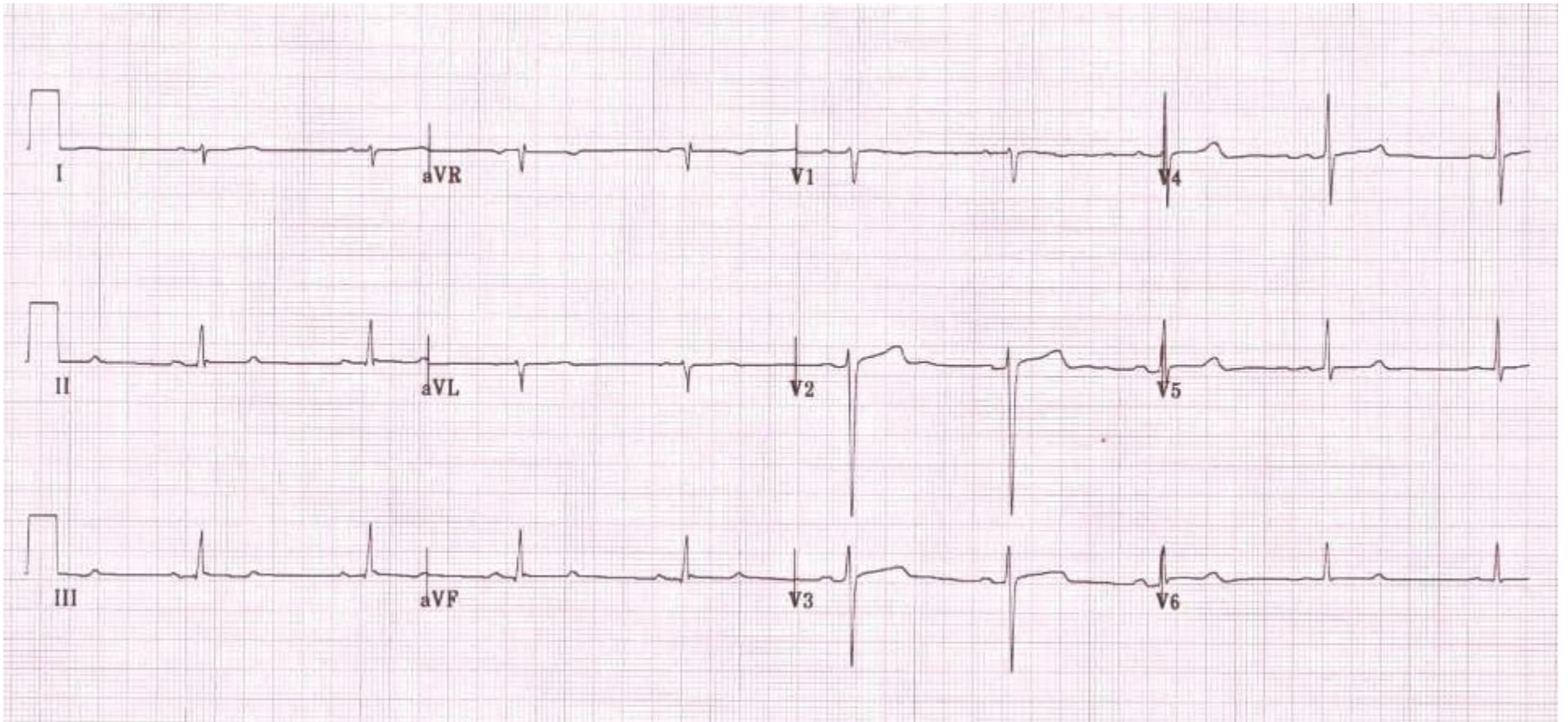
ST Segment

QT Interval

What part of the conduction system is affected in this EKG?

What is the clinical significance of this EKG finding?

Triage EKG—Unit 7, Case 27



Courtesy of Edward Burns of [Life in the Fast Lane](#)

[Creative Commons License](#)