

Foundations EKG II - Unit 9, Case 34



37 year-old female with history of migraines complaining of a sudden onset, severe headache.

HR: 55 BP: 210/120

RR: 18 O2 Sat: 97%

What is your interpretation of the EKG?

History/Clinical Picture

Rate

Rhythm

Axis

P Waves

Q/R/S Waves

T Waves

U Waves

PR Interval

QRS Width

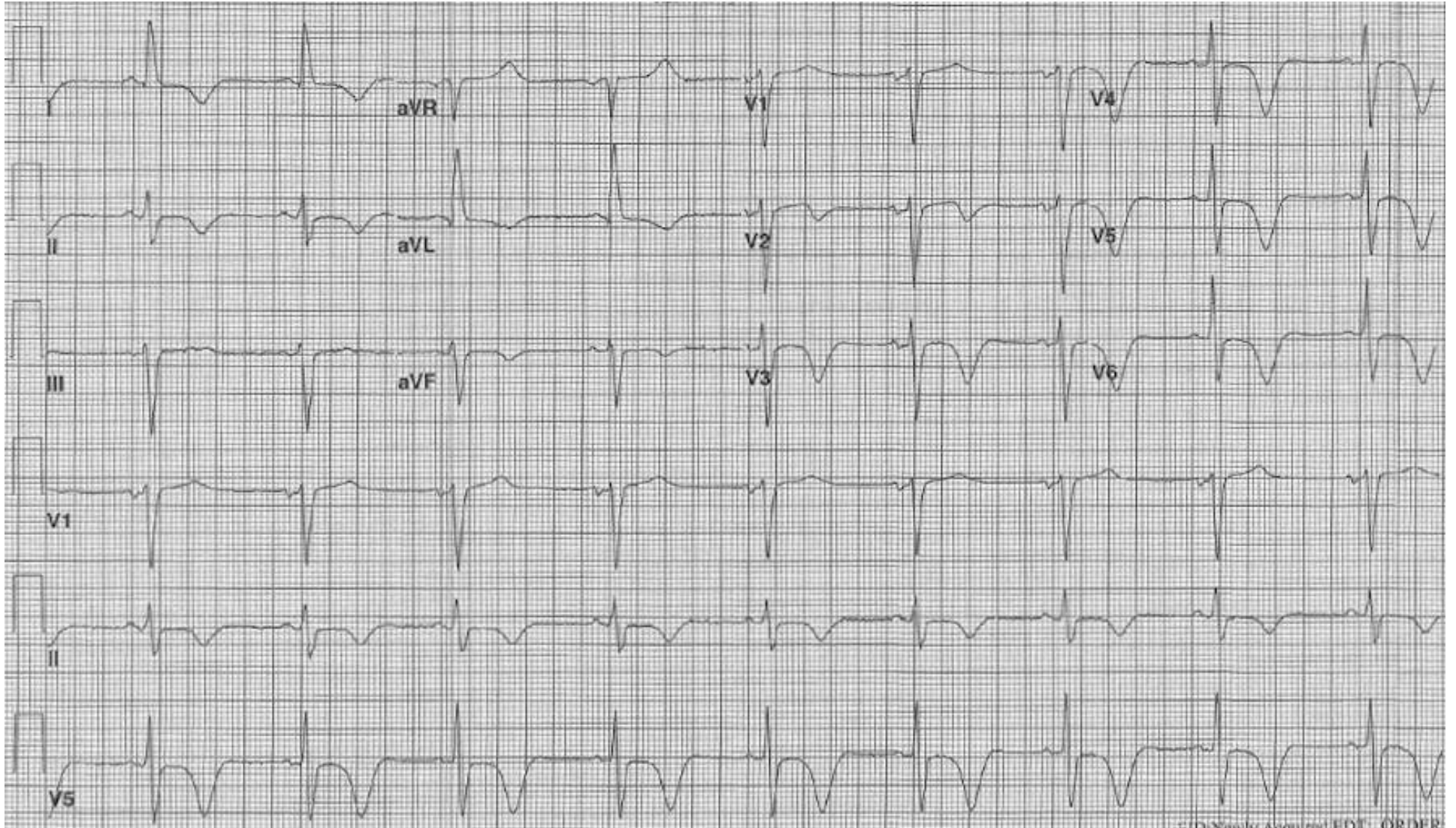
ST Segment

QT Interval

Putting the EKG together with the clinical history, what do you think is going on with this patient?

How would you manage this patient in the ED?

Triage EKG—Unit 9, Case 34



© 2013 Xcelera. All rights reserved. ECG ORDER