

Foundations EKG II - Unit 11, Case 42



21 y/o M with no PMH presents for syncope without a prodrome that occurred while riding his bike. He reports an episode of palpitations and pre-syncope 3 weeks ago.

HR: 70	BP: 120/70
RR: 12	O2 Sat: 98%

What is your interpretation of the EKG?

History/Clinical Picture

Rate

Rhythm

Axis

P Waves

Q/R/S Waves

T Waves

U Waves

PR Interval

QRS Width

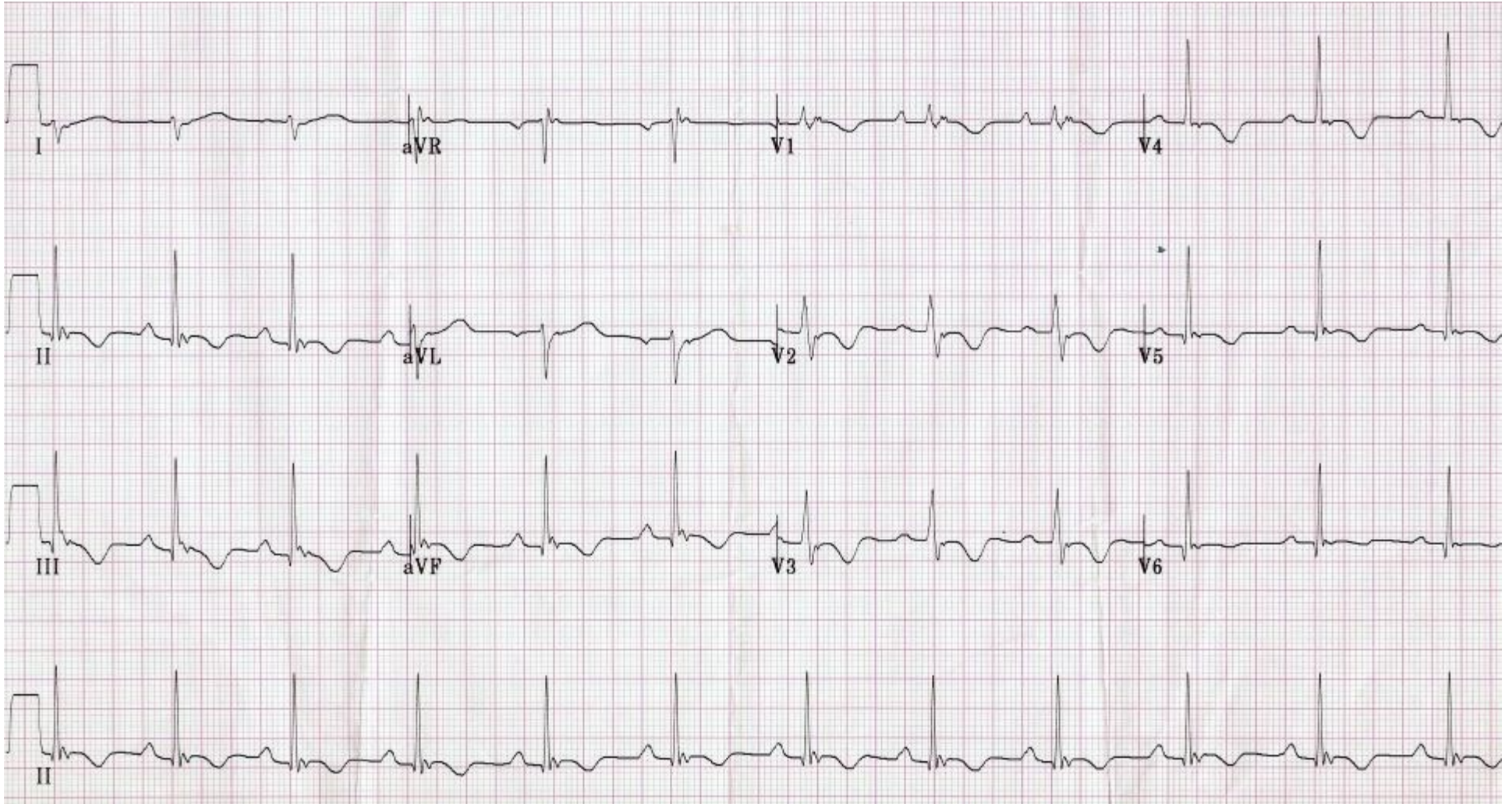
ST Segment

QT Interval

What is your diagnosis?

How would you disposition this patient? Does this episode of syncope merit inpatient admission, or is it safe to discharge him home?

Triage EKG—Unit 11, Case 42



Courtesy of Edward Burns of [Life in the Fast Lane](#)

[Creative Commons License](#)